

Release note for 2.3.1 BETA

Notes

Portfolio Manager replaces and improves traditional methods of opening project files. All project files are now opened via the Portfolio Manager, instead of directly opening the .btpj. For existing files, please use the new Import Portfolio option, located in the Portfolio Manager.

Art-Net inputs now start at 0 instead of 1. sACN remains starting at 1.

The Undo Stack has now been limited to only allow the last 10 steps as selectable at a time. All steps are still viewable, and all steps are still undo/redo-able (in batches of 10).

Apply Options have been removed in this version, but 'Send Tracking Information to WYSIWYG' has been added to System Configuration, BTWYG in case BTWYG is not intended to be used.

Trackable Setting's Orientation toggle has been replaced with a new setting in System Configuration, Beacons called 'Process Classic Beacon Orientation'.

Motive Dongle Date Requirement:

July 26th 2016

Major changes:

- Portfolio Manager
- Auto Save
- Save Archiving and Revert Project

Known issues:

- If floating widgets are open when a Portfolio is closed, the widgets remain open but inaccessible
- After opening a Portfolio, Messages may not be triggered to display updates

Firmware Package Date:

August 2017

Build Numbers:

BlackTrax: 2.3.1.10750

BTWYG: 2.39.58.211

Motive: 1.10.1.3.28991

Server Version Requirement:

July 2016

Compatible with RTTrP Versions:

6

1.8.3

1.8.7

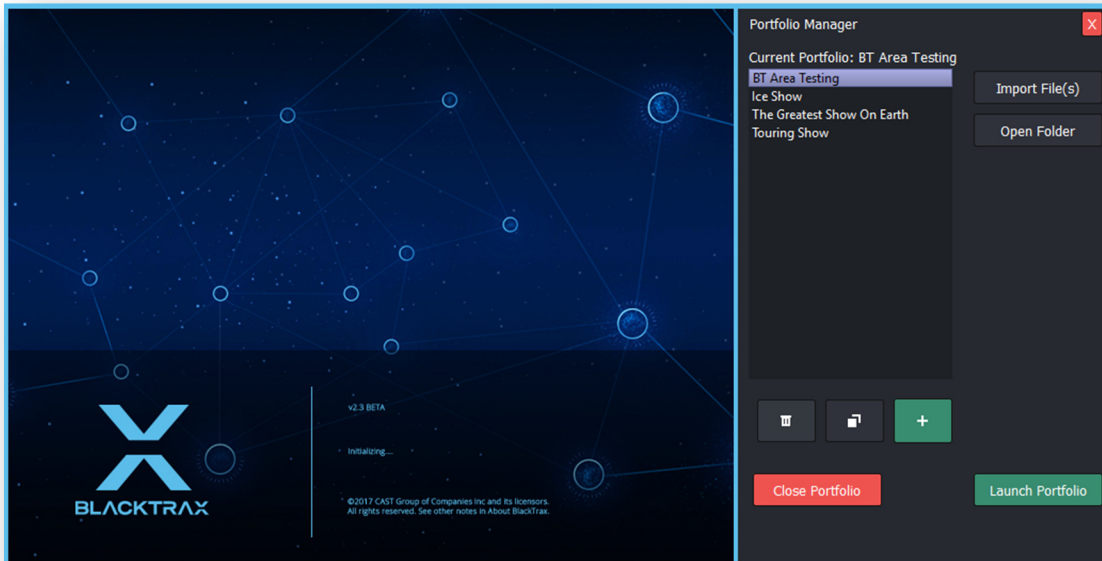
Features and Fixes:

Bug

- *Fixed: Main GUI could crash if a fixture calibration file is imported with fixtures that do not exist in the current project*
- *Fixed: Main GUI could crash if a Show Report is exported with missing items (such as Trackables or Fixtures)*
- *Fixed: Opening a previous project with Art-Net inputs saved results in the proper Universe being selected*
- *Fixed: Running Chapters and Books would not scroll to the current Chapter or Book if the Main GUI opened while DMX Control was enabled and a Chapter/Book further down the list was being selected*
- *Fixed: Multiple chapters could appear selected in Running Chapters when DMX Input is enabled and the console changes between books*
- *Fixed: If the folder that a BlackTrax project is saved in is missing, the file would fail to save*
- *Fixed: BlackTrax would sometimes think a project needs to be saved even when it did not and thus prompt the user to save the file during closing*
- *Fixed: When closing the Main GUI, an incorrect message line could sometimes appear alerting the user about creating a new project*
- *Fixed: Additional undo and redo operations not taking into account Book selection such as renaming Chapters, changing calibration presets on Chapters, and creating, cloning, deleting, or moving chapters or fixtures*
- *Fixed: Rigid bodies were incorrectly being added to the Beacon tab in Output Configuration in rare circumstances*
- *Fixed: Deleting all Classic Beacons was not reflected in Output Configuration until motion data was received*
- *Fixed: Rigid and Soft bodies will now only be added to the Output Configuration and Beacon Widget if they have LEDs assigned*
- *Fixed: WYSIWYG was spelt incorrectly in Output Configuration's Coordinate System drop down*

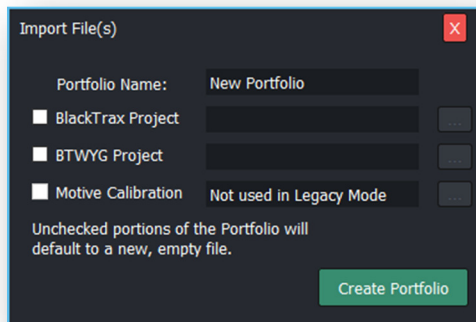
New Feature

- *Portfolio Manager*



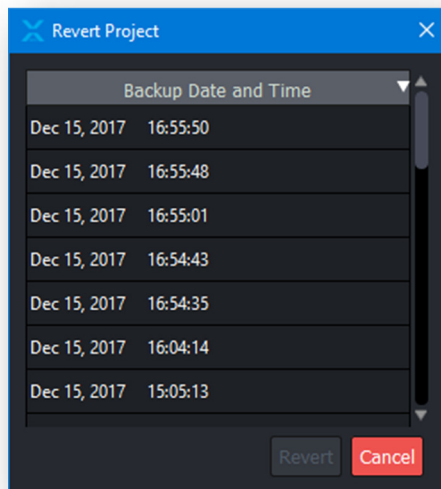
- *All new way to manage BlackTrax projects, BTWYG projects, and Motive files (Motive files are coming in a later release)*
 - *A Portfolio refers to a collection of the above project files*
- *Portfolios are saved at C:\BlackTrax Portfolios and contain folders and files for a BlackTrax project and a BTWYG project*
- *Portfolios are openable from the Main GUI (the splash screen is now a widget to manage this – in addition to opening when BlackTrax starts, it is also accessible from the Portfolios button at the top right of the GUI)*
 - *If Portfolio Manager is the only GUI element visible (meaning the Main GUI is closed), then closing Portfolio Manager will result in the BlackTrax application closing as well*
- *Portfolios can be opened by clicking 'Launch Portfolio' or by double clicking them*
- *When a Portfolio is launched it will automatically load the corresponding BTWYG file as well (this can be turned off in System Configuration, Editing if desired)*
 - *If BTWYG is already open, then the new file is attempted to be opened in the existing instance of BTWYG (a save prompt may be triggered in BTWYG if changes are unsaved)*
- *Current Portfolio is displayed on the top right of the GUI*
 - *As such, the project path has been removed from the title bar and Project Properties*
- *Creating Portfolios*
 - *Clicking the '+' button in Portfolio Manager will create a new Portfolio and use a blank template file for both BlackTrax and BTWYG projects*

- *Portfolios may also be created by manually creating a Portfolio path in C:\BlackTrax*
Portfolios\<NAME>\BlackTrax\<NAME>.btpmj
 - *Any Portfolios that match this folder structure and has a .btpmj file will be considered a valid Portfolio and will appear in the Portfolio Manager*
 - *In this case, when the Portfolio is opened for the first time, a template BTWYG project will be assigned*
 - *You can use the duplicate button to create a copy of the currently selected Portfolio*
 - *When duplicating or creating new Portfolios and the same name is detected, Portfolios will be renamed with an incrementing number in this format '(X)' – example: (1), (2), (3), etc.*
 - **Note:** *The last part of the Portfolio name is reserved for this incrementing, meaning if a Portfolio has a '(NUMBER)' at the end of it, it may be overwritten when duplicated*
 - **Note:** *This does not copy any project history*
- *Importing Portfolios*



- *If coming from a previous version of BlackTrax, or if you already have an existing WYG file, you may import your current projects into a BlackTrax Portfolio*
 - *Click on Import Portfolio, and select which files you have (BlackTrax or BTWYG)*
 - **Note:** *If a project is not selected, then the template file will be used for that project type*
 - **IMPORTANT:** *It is no longer possible to open a .btpmj directly from Explorer and projects must now be imported/opened from within BlackTrax now*
- *You can close a running Portfolio via the Close Portfolio button*
- *If no Portfolio is running, the Main GUI will not be visible*
 - **Note:** *This does not close BTWYG, it only closes the BlackTrax project*
- *You can delete a Portfolio via the trash icon; this will delete all files from the Portfolio's directory*
- **Note:** *You cannot delete a Portfolio if it is currently open*

- **Note:** If BTWYG is running, then not all Portfolio files may be deleted (an error will appear) – be sure to close BTWYG before deleting any Portfolios
 - To view the folder and files of the currently selected Portfolio, select 'Open Folder'
 - Any error messages or statuses will be displayed at the bottom of the Portfolio Manager for five seconds
- Auto Save will automatically save the BlackTrax project after 10 minutes have passed since an editing change took place (10 minutes by default, but can be changed between 5-30 minutes in System Configuration, Editing)
- Save Archiving and Revert Project



- In addition to the Portfolio structure, BlackTrax will now create a '.btbak' backup file in a 'Project History' folder within the Portfolio every time the project is saved (either via a manual save or an Auto Save)
- You can revert to any previous backup file via the new File -> Revert Project menu item
- When a project is reverted, the main file will be overwritten with the backup file and re-saved as the '.btprj' file

Improvement

- When a .btprj is opened from Explorer, BlackTrax will display a message saying the file must be opened via Portfolio Manager instead
- If Monitor is not running and a save is preformed, BlackTrax will now automatically try to save the file again after monitor is launched
- BTWYG is now limited to a single instance, meaning only one file can be opened at a time (this is to ensure the correct instance and file of BTWYG is connected to the correct BlackTrax project)
- BTWYG has been added to the Modules menu in the Main GUI; when clicked BTWYG will open and the project file for the current Portfolio will be loaded
- Open most recent project has been replaced with open most recent Portfolio
 - If checked, then the Portfolio Manager will be bypassed and the most recently opened Portfolio will open instead
 - If unchecked, Portfolio Manager will launch before the Main GUI every time BlackTrax is started

- *New Project (for BlackTrax and BTWYG), Open, Recent Files, Save As, and Close Project* have all been removed from the File menu and toolbar as their functionality has been integrated into the Portfolio Manager
- *System Status* will now display if data is sending even if the system analysis is skipped
- *Undo Stack* now no longer allows the user to select items farther back than 10 steps instead of previously allowing this selection and attempting to undo the last 10 steps which usually failed
- *Re-factoring and refinement of backend code for Dynamic Zones*
- *Library widget* can now sort based on the Dynamic status of a Zone

Design Review

- *System Status and BTWYG Patch* have received a facelift to make them more readable

The screenshot shows the 'System Status' window with the following data:

Tracker:

Connection	Status	Packets	Data Sending
Motive	Connected	2222	Yes
Router	Connected	2225	Yes
Tracking Adapter Output	connected	2222	Yes

Follower:

Connection	Status	Packets	Data Sending	Note
Motion	Connected	2224	Yes	
DMX In	Connected	0	No	SACN
BTWYG	Connected	0	No	
RTTfPL	Disconnected	0	No	

Tracking Adapter (Media):

Connection	Status	Packets	Data Sending
Tracker Input	Connected	2222	Yes
RTTfPM	Connected	2222	Yes

Output Latency:

Name	Latency (ms)
Media	2.4079

- *Headers of the tables* have been given a background
- *Colours* have been added to connected and disconnected statuses
- *Additional spacing* has been added to the cells to give more 'breathing' room
- *System Status and System Configuration* have been made slightly wider by default to accommodate new items
- *If a Show Report is exported with missing items*, red text is inserted in the report detailing the missing items (such as Trackables or Fixtures)
- *New Motive Project* has its own menu item now called 'New Motive Project' as the new BlackTrax and BTWYG file menu items have been integrated into the Portfolio Manager
- *Track Even With Warnings* has been removed from System Configuration as it literally did nothing